



The Appleton School Parent Bulletin

28.02.25

Key Dates:

Year 13 mock exams
03.03.25 to 14.03.25

Non-pupil day 07.03.25

Follow us on:

Facebook

[The Appleton School](#)



Instagram

[The Appleton School](#)



House System

Congratulations to all pupils in Year 7, 8 and 9 and 10 for your achievement points that you have earned since the start of the academic year.



House	Grand Total
Austen	16962
Nightingale	17308
Tull	19425
Turing	17518
Grand Total	71213

Attendance & Achievement

How much does attendance impact on achievement and success?

The school's expectation of attendance is at least 97%. The impact on good attendance on your progress is shown in the table below with 94% of students achieving their target grades at the end of year 11. The higher your attendance the best possible chance of personal success!

Attendance %	Achieve expected target grades.	You will only achieve your target grade in:
<80%	20%	2 of your subjects
80-84.9%	33%	3 of your subjects
85-89.9%	46%	4 of your subjects
		You will achieve your target grade in:
90-91.9%	53%	5 out of 9 subjects
92-95.9%	75%	7 out of 9 subjects
96%	84%	8 out of 9 subjects
97%	94%	9 out of 9 subjects



Correspondence sent out this week

Date	Letter	Year/whole school
10.02.25	Year 10 Hate Crime Letter	Year 10
11.02.25	Naples Trip 2026 Launch Letter	Ancient History & Geography
12.02.25	Leavers Hoodies	Year 11
26.02.25	PE Kit Letter 25	Whole school





Year 11 Revision

Walking Talking Mocks

Walking Talking Mocks are opportunities for students to see staff approaching exam questions and how they break down questions. Walking Talking Mocks (WTM) have been shown to help students with exam skills, improve confidence within an exam and improve outcomes.

As we can see the value in these sessions, these will be held every Wednesday in place of their PE lesson, students in Y11 currently have PE 3 times a fortnight and whilst we appreciate the importance of exercise and healthy bodies we will be commandeering one lesson to support the WTM.

The WTM will focus on English, Maths and Science.

Below are when the sessions occur.

X-side A Wednesday Period 3

Y-Side B Wednesday Period 2

Previously recorded WTM can be found here: [Science](#)

Revision Sessions

Revision timetable below:

ASPIRE REVISION SCHEDULE



TIME	MONDAY	TUESDAY	WEDNESDAY	THURSDAY	FRIDAY
8:00 8:25	GENERAL REVISION RESOURCE CENTRE	GENERAL REVISION RESOURCE CENTRE	GENERAL REVISION RESOURCE CENTRE	GENERAL REVISION RESOURCE CENTRE	GENERAL REVISION RESOURCE CENTRE
8:30 8:45	ENGLISH LANGUAGE IN FORM ROOMS	MATHS WITH YOUR MATHS TEACHER	SCIENCE IN FORM ROOMS	ENGLISH LITERATURE IN FORM ROOMS	ASSEMBLY
13:25 13:55	GENERAL REVISION T15	GENERAL REVISION T15	GENERAL REVISION T15	GENERAL REVISION T15	GENERAL REVISION T15
15:00 16:00	GEOGRAPHY - C21/C16 FRENCH FOUNDATION - S5 GERMAN - S8 BUSINESS - T14/N10/615 MUSIC - I3 IMEDIA - C9 HISTORY - C15 ART - T13 D&T - C6	MATHS REVISION USUAL CLASSROOM	COMBINED SCIENCE SEPARATE SCIENCES 2ND FLOOR OF TOWER ASTRONOMY T12	ENGLISH REVISION I BLOCK	FRENCH HIGHER - S2 DRAMA - I1 MUSIC - I3 ENTERPRISE & MARKETING - N11 ART - T11

Achieving Excellence



Year 9 Options

Year 9 Options Evening

Thank you to all our Year 9 parents and students that attended our Options Evening this Thursday. We had a record number of families attend and we hope you found the evening informative.

Please see below a reminder of some key dates coming up:

Friday 28th February

The options form will go live and will be shared with parents/ carers and students.

Friday 10th March

Deadline for all option choices to be submitted.





Year 11 Revision



Monday 27th January 2025

Dear Parent/Carer,

We are pleased to inform you that we are offering a dedicated Revision Space for all our Year 11 students.

This initiative was introduced in their most recent Assembly, and we are already seeing good attendance.

The Resource Centre is open from 8:00 AM until form time, and then again from 3:00 PM to 3:40 PM, providing students with access to computers and a quiet space to work in preparation for their GCSE exams. A staff member will be present during these times to offer support.

Additionally, students have the option to work in T15 during lunchtime with a staff member available for guidance.

If you believe your child would benefit from this opportunity, please encourage them to take advantage of the available space.

Yours sincerely,

Dr. R. Reay
Associate Assistant Headteacher

Headteacher: Sarah Cox, BA (Hons)
Croft Road, Benfleet, Essex, SS7 5RN Tel: 01268 794215
Email: info@theappletonschool.org Website: www.theappletonschool.org



THE APPLETON
SCHOOL



The Appleton School is part of Compass Education Trust Ltd, a company limited by guarantee, registered in England and Wales. Company number 07666213. Registered Office: The Billericay School, School Road, Billericay, CM12 9LH



Shoutouts

The Appleton School would like to say a massive well done to Lucy Haywood (YR12) for being elected onto the Youth Essex Assembly. Lucy was elected to represent the Castle Point District on the Youth Essex Assembly on Saturday 1st February 2025. Congratulations to Lucy on this Achievement, committing her time to represent young people and making a positive impact.

On Tuesday 25th February, we had 25 trainee teachers in school with BTSA exploring how teachers use different types of assessment and how this impacts their next steps. We had 6 pupils who came to be interviewed by teachers and who spoke confidently about the different types of feedback that they get in school, the different types of interventions that staff have put in place and how this has helped them to improve their work. Many of the attendees unequivocally cited the pupil interviews as some of the most insightful and impactful elements of the day and Mr Norman would like to publicly thank Bevan Adams (Y12), Myah Arnold (Y10), Henley Blogg (Y10) Hayley Bower (Y10), Nina Lad (Yr 9) and Bethany Stock (Yr10) for their input and for representing the Appleton School Community so well.

Mr Norman

Congratulations to Rhys for his amazing efforts and achievements in his Karting Championship.

The Karting Championship is made up on approximately 32 drivers, divided into 2 heats (A and B). The points accrued determine their final races. In Heat 1, Rhys placed 10th due to an early spin out, but quickly gained 5 positions back. In Heat 2, Rhys finished 2nd, placing him into the B final and starting in the pole position. Rhys finished 1st in this, and consequently moved into the A final in a starting position of the last of the grid. Out of 11 drivers in the final, Rhys finished 2nd!

Well Done, Rhys!



**SHOUT
SHOUT**



UKMT Intermediate Maths Challenge



UK Maths Trust

UKMT Intermediate Maths Challenge

The Intermediate Maths Challenge took place this term for our most able maths students in Years 9, 10 and 11. Congratulations to all our students who achieved Gold, Silver or Bronze Awards this year.

Year 11

Congratulations to Josh Coomber and Finn Wightman who both achieved Gold. They also go through to the next round – “The Pink Kangaroo Challenge”. Josh Coomber also achieved “Best in School”.

Year 10

Congratulations to Connor Grant and Stanley Sycamore who have also both achieved Gold. Connor has achieved “Best in Year 10” and goes through to “The Pink Kangaroo Challenge”.

Year 9

A huge well done to Louie Clarke and Jack Cox who both achieved Silver. This is hard to do on this challenge as they will not have experienced as much maths as students in Years 10 or 11. Louie has achieved “Best in Year 9”.



**SHOUT
SHOUT**



LOST PROPERTY

Please be aware that any named items that are handed in to lost property are routinely returned to students. However, we have a large number of unnamed items that have built up, and we would like to reunite these with their owners if possible.

To help us with this, if your child has lost anything in school, please ask them to go to the Main Office during break or lunchtime to check if their item is in lost property.

Lost items currently held include coats, shoes, trainers, uniform, jewellery, headphones and glasses.

Thank you for your assistance with helping us reunite any items of lost property with their owners.



Lost property



PE Fixtures

Monday 3rd March

Year 7 Rugby 7s Tournament **New Hall school**

Tuesday 4th March

Year 8 Boys Football v KES at **Home**

Year 9 Rugby v Woodlands **Away**

u13 National Bowl QF v **Gordons School**

Wednesday 5th March

Year 7 Athletics at **Lee Valley**

Year 8 Rugby Tournament at **New Hall**

Thursday 6th March

Year 7 Football v CV at **Home**

Year 7 Girls Basketball v KJ **Away**

PE SHOUT OUT

Congratulations to our year 7 Basketball team who won against King Edmunds 32-23 coming 2nd in our round of district 2 out of 3.

NETBALL RESULTS

Year 7 vs Cornelius 9-3 WIN

Year 8 vs Cornelius 17-0 WIN

Year 8 vs King John 12-4 WIN

Year 9 vs King John 11-7 LOSS





Safeguarding

All The National College, our WakeUpWednesday guides empower and equip parents, carers and educators with the confidence and practical skills to be able to have informed and age-appropriate conversations with children about online safety, mental health and wellbeing, and climate-change. Formerly delivered by National Trust's Safety, these guides now address wider topics and themes. For further guides, blogs and tips, please visit nationalcollege.com.

What Parents & Educators Need to Know about MARVEL RIVALS



WHAT ARE THE RISKS?

Marvel Rivals launched in December 2024 and amassed a player count of nearly 150,000 in mere weeks. This player versus player (PvP) shooter pits in a host of recognisable comic-book characters, pitting two teams of six against each other. Despite the game's cartoonish nature, there are several potential risks for parents and educators to be aware of.

IN-GAME CHAT

Voice chat allows players to speak to teammates and opponents within the game, but this competitive environment, where some sessions can become unpleasant, can lead to equally unpleasant arguments. Text chat is equally present during these playing sessions, and while shown on the side of the screen, instructions on chat is relatively low, so it's important to recognise that potentially inappropriate messages could arise at any time.

IN-GAME PURCHASES

While Marvel Rivals is free, there is an in-game store, selling character skins from recognisable movies and comic-book titles. Each season also includes a 100 gems free (much like those seen in Halo and Call of Duty), offering a series of valuable in-game items. These items don't expire – but they can't be purchased once the next season rolls around, so you'll lose out on the next season rolls around, so you'll lose out on the next season rolls around.

CONTACT WITH STRANGERS

With such a large player base, it's impossible to predict when your child will be teaming up with or playing against. They're virtually certain to run into strangers through voice and text chat, for starters. Most of these people will be like ordinary gamers enjoying the action, but there is the risk of toxic and harassing behaviour. Inappropriate with younger players – either intentionally, or because they don't realise that they're speaking to a child.

VOLENT CONTENT

There's no gore in Marvel Rivals, and the violence depicted is comparatively safe, but the possible character interactions vary between their traditional superheroes and supervillains, and figures like Iron Man and the Hulk, who are more realistic figures. Given the game's nature as a shooter, this may make some parents and carers uncomfortable as some players will be firing these weapons at each other.

INAPPROPRIATE CONTENT

The game includes some language and mature themes in the dialogue, which could expose younger players to content unsuitable for their age, but according to a safe and family-friendly gaming page from the UK government, the content of the in-game chat could be more inappropriate, so you'll want to consider to ensure that you're not exposing your child to potentially harmful content.

FAMILIAR CHARACTERS

The inclusion of iconic characters like Iron Man and the Hulk, plus the increasing popularity, means that younger Marvel fans will likely be eager to see what the game is about. However, it's best to consider playing the game yourself to gauge how you feel about it before playing it. Alternatively, you could let them play against the game's AI Practice Mode, and they'll still be able to enjoy the game.

Advice for Parents & Educators

FOLLOW ESRB RATINGS

The ESRB rating for Marvel Rivals says the game shouldn't be played by anyone under 13, and children of that age will be able to play with the most common of the game's characters (people who play as Hulk, the Hulk of Earth, for example), while also ensuring that the violence, however cartoonish, isn't excessive.



FAMILIARISE YOURSELF

The game's inclusion of fan-favourite characters like Iron Man and the Hulk, plus the increasing popularity, means that younger Marvel fans will likely be eager to see what the game is about. However, it's best to consider playing the game yourself to gauge how you feel about it before playing it. Alternatively, you could let them play against the game's AI Practice Mode, and they'll still be able to enjoy the game.

MONITOR OR TURN OFF CHAT

Voice and text chat can both be disabled within the in-game settings. If you're particularly concerned about exposing children and young people to them, however, you can disable both forms of chat in the game's settings. If a child would be going alongside friends, remind them that they can see their friends' party chat history in their own and third-party service like Discord.



DISCONNECT PAYMENT OPTIONS

Parents should ensure that all payment options – such as credit cards – are linked to the game, to prevent unwanted real purchases and charges. Children can be tempted by in-game items without fully understanding the costs. Removing payment methods avoids impulsive in-game spending and leads to a sense of financial awareness, teaching young people to be careful with their money.

Meet Our Expert

David Coleman is Games Editor at the Daily Mail and has been working in the gaming and tech industry for five years. A regular visitor to the App Store to try out new tools, he's also a parent and understands the importance of online safety, writing mainly about tech and fitness, he has been published on sites including BBC, TechRadar and many more.



@wake_up_weds

www.thenationalcollege.com

@wake.up.wednesday

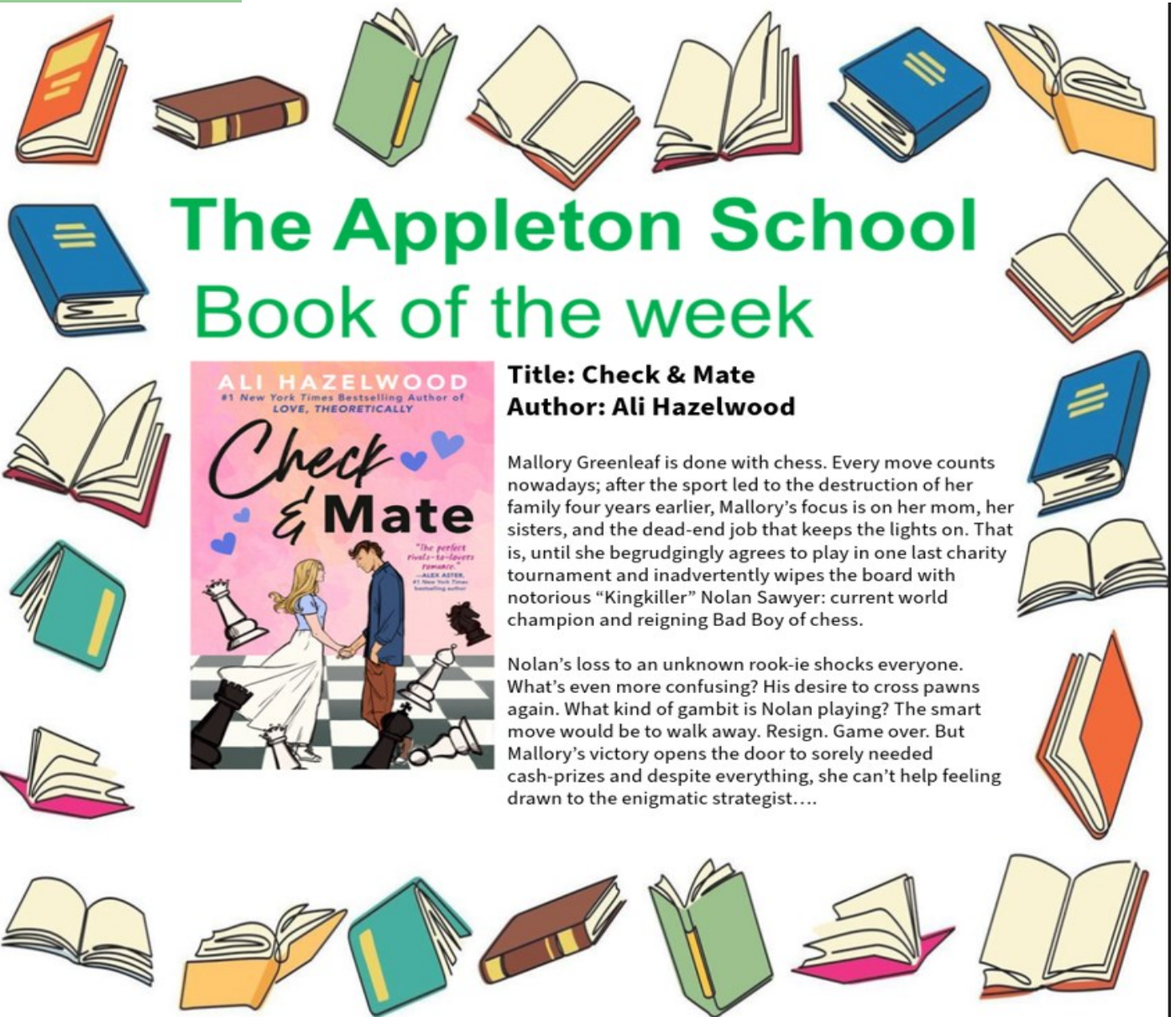
@wake.up.weds

Users of this guide do so at their own discretion. No liability is entered into. Current as of the date of release: 31-03-2025



General Notices

Book of the Week: Sky's End By Marc Gregson



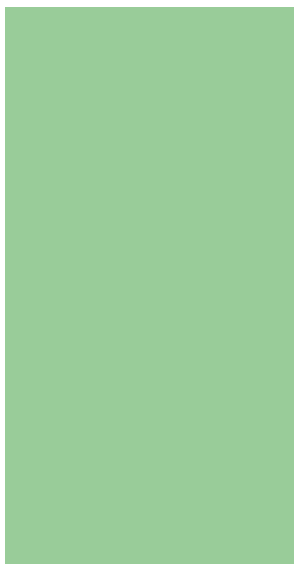
The Appleton School Book of the week



Title: Check & Mate
Author: Ali Hazelwood

Mallory Greenleaf is done with chess. Every move counts nowadays; after the sport led to the destruction of her family four years earlier, Mallory's focus is on her mom, her sisters, and the dead-end job that keeps the lights on. That is, until she begrudgingly agrees to play in one last charity tournament and inadvertently wipes the board with notorious "Kingkiller" Nolan Sawyer: current world champion and reigning Bad Boy of chess.

Nolan's loss to an unknown rook-ie shocks everyone. What's even more confusing? His desire to cross pawns again. What kind of gambit is Nolan playing? The smart move would be to walk away. Resign. Game over. But Mallory's victory opens the door to sorely needed cash-prizes and despite everything, she can't help feeling drawn to the enigmatic strategist....





We are excited to announce that we have received some new prom dresses from Lady McAdden.

If you would like to view our catalogue or register your interest, please contact our

Main Office:
01268 794215





General Notices

Vision and Values

Currently, our students are reviewing the core vision and values of our school. Our vision is that we are “achieving excellence” together. Our core values help us learn important qualities and behaviours that encourage us to be responsible and kind citizens, and help us grow as individuals and in friendships.

- ⇒ **Respect:** We should appreciate everyone in our community. We are all unique and deserve kindness. We should also take care of our school family and wider community.
- ⇒ **Resilience:** It's important to face challenges bravely. We can learn from our mistakes and successes. We should be ready for changes and handle tough times calmly.
- ⇒ **Community:** We are all part of the Appleton family. Let's all work together to make our school a happy place. We should be proud of our diverse community and get involved.
- ⇒ **Aspiration:** We should aim high and always try our best. Let's work hard to do well in everything we do.

Respect

Recognise the value we all give to society. Recognise we are all different from one another and deserve respect. Care for our immediate and wider environment. With respect being fostered by our community we will **excel together**.

Resilience

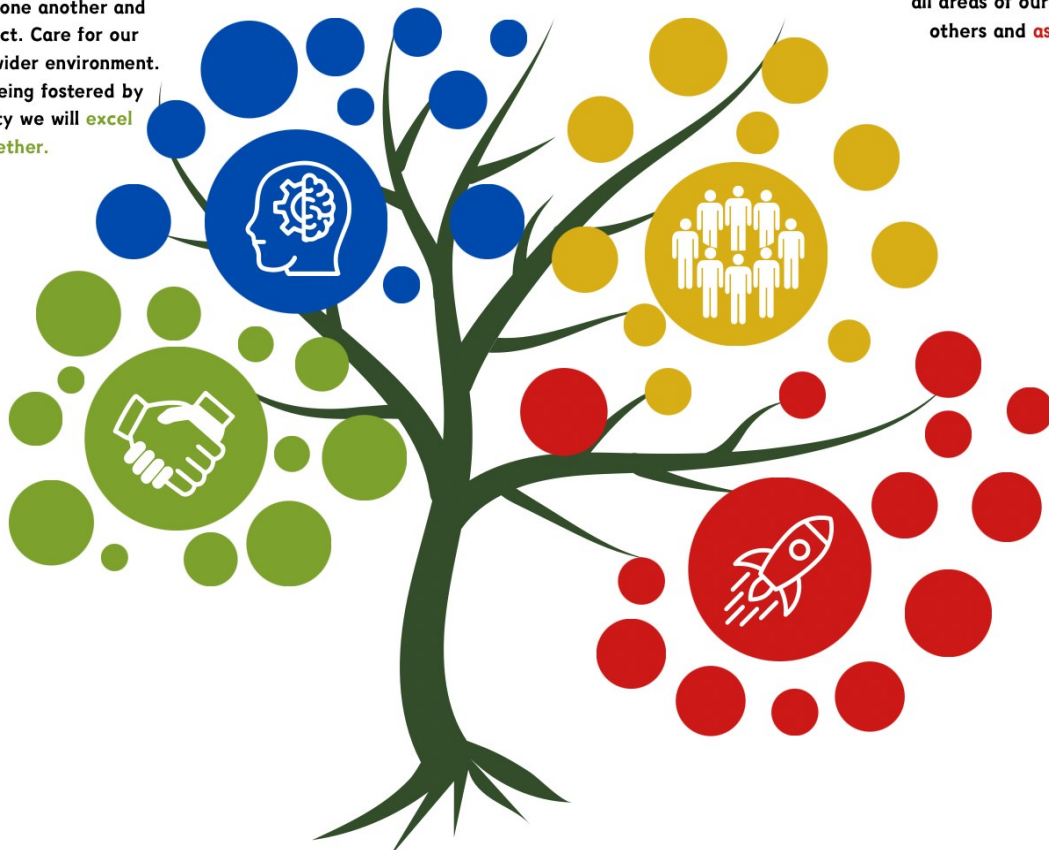
Embrace the opportunity to face challenges. Value the chance to learn and grow from both our successes and mistakes. Adapt to change and manage stress to overcome set-backs, leading to us to **persevere together**.

Community

Commit to making a positive contribution to our Appleton Family. Value and connect with our diverse community with purpose and pride. By working together we will **innovate together**.

Aspiration

Commit to ambitious individual goals and have high expectations. Demonstrate motivation to thrive in all areas of our lives. To inspire others and **aspire together**.





Attendance



Being In School, On Time Really Matters



Did You Know... ?

If your attendance	You would miss	you are likely to achieve your target grade in
was 97%	5 days of school	9 out of 9 GCSEs
was 95%	9 days of school	7 out of 9 GCSEs
was 92%	15 days of school	5 out of 9 GCSEs
was 90%	19 days of school	4 out of 9 GCSEs
was 85%	29 days of school	3 out of 9 GCSEs

WE WANT YOU TO ACHIEVE YOUR BEST

Check your current attendance using the Arbor App

100% Attendance



Did you know that all students with 100% attendance are entered into a weekly prize draw for a Golden Ticket to jump the queue at break and lunch?

And students with 100% attendance all term receive a special attendance award!

ATTENDANCE

Attendance Matters



Research shows us that there is a direct link between pupils attendance at school and how well they achieve

Congratulations to the following tutor groups who had the best attendance in their year group this week.

706	Mr Dris	95.9%
709	Mr Gnahore	95.9%
806	Mr Dacosta	94.8%
909	Mr Kyprianou/Miss Bowles	96.3%
1004	Mrs Bell/Mrs Cannon	91.5%
1107	Miss Edwards/Mrs Dowle	94.1%





General Notices

Attendance

Please note, when reporting your child's absence from school please report this by the **Arbor App** or email:

absence@theappletonschool.org

Just a reminder the back gate locks at 8.30am after this time you will need to enter via students services in Croft Road.



Attendance Matters





General Notices

DESIGN A MURAL COMPETITION: 2025 Grantham Climate Art Prize

Students aged 11 – 25 are invited to enter the 2025 [Grantham Climate Art Prize](#) by designing a mural to draw attention to the climate crisis. Two murals will be unveiled at Imperial College London in 2025. Designs for the first mural – at South Kensington campus – are now being sought. The winner will get a £200 prize and three runners up will get £100 each – all in gift vouchers.

Students from schools, colleges and universities can submit a design for the mural with the theme From Grey to Green – focusing on the importance of boosting nature and green innovation to allow us to have a more sustainable future, which will be better for the planet and for our physical and mental health.

The winning design will be transformed into a large-scale (9.4m by 2m) mural by a professional artist while runner-up designs will be exhibited on the campus.

The art prize is a biennial competition and previous themes have included British Biodiversity Loss (2021) and A Greener, Cleaner, Cooler World (2023), inspired by our 9 things you can do about climate change: www.imperial.ac.uk/stories/climate-action/. As well as the 12 murals across Great Britain – from Brighton to Glasgow – we've had exhibitions of winning and runner-up designs at COP26, in museums, and on billboards in London's transport hubs.

Enter via the competition webpage: www.imperial.ac.uk/grantham/events/grantham-art-prize/ The deadline is 31 January 2025. Otherwise you need to you can send a clear photograph of your landscape style design as a JPEG, PNG or GIF less than 20MB to granthamartprize@imperial.ac.uk with **your name, email address, date of birth, age, title of your artwork and a brief description of the design**. If sending several entries (teachers) please do so separately, or by www.wetransfer.com with the required info for each image.

ENTER HERE ↓ QR SCAN

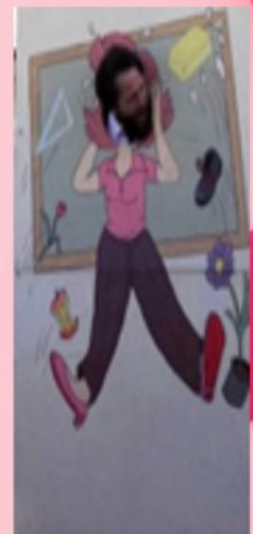


IMPERIAL Grantham Institute





Our Valentines seasonal fundraising has been a huge success! Last Friday the Year 7 Valentines disco raised a total of **£765** and our Sixth Form Charity Week finished off today raising a total of **£443.76** for Brain Tumour Research charity. They sold a range of products including cakes, sweet cones and Valentines roses and of course sponge a teacher Friday lunchtime!





Exploring Sleep and Emotions in Adolescence

Are you aged between 16-18? Would you like to take part in an online research project?



What is the research about?

We are exploring the relationship between sleep and emotions in late adolescence. How much impact does a bad night's sleep have on our ability to process emotions?

We are looking for 16-18 year olds living in the UK and we welcome those from all backgrounds to take part.

Whilst lots of us know that sleep is important (especially for teens), scientists are still learning about how sleep impacts our lives. By participating in this study, you will be helping to contribute to the scientific understanding of sleep!

Who is conducting this research?



My name is Hannah and I'm a Trainee Educational Psychologist at the University of Southampton. I am interested in learning more about sleep and its impact on adolescents. You are welcome to email me if you have any questions:

✉ H.L.Ravenhall@soton.ac.uk

The University of Southampton Research Ethics Committee has granted ethical approval for this research. ERGO-II number: 100209
Version 4.0 • Date: 17/01/2025

For taking part, you will have the chance to win a £20, £50 or £100 Amazon voucher!

Tasks

If you would like to take part, you will need to:

1) Log onto a laptop/computer (unfortunately, this cannot be done on a mobile phone or tablet)



2) Scan the QR code or follow the link:
<https://tinyurl.com/teen-sleep-research>



3) If you choose to take part in the study, you will:

- Answer questions about yourself (e.g. your age, gender, lifestyle)
- Answer questions about your sleep
- Answer questions about your feelings and emotions
- Complete tasks which involve recognising emotions



We expect this to take about half an hour.



Following your participation, you can enter the prize draw by providing your email address, (please note, your personal information will not be held for more than 12 months after the study)



Bouldering Club Sessions



'Give it a go' taster sessions

Wednesdays Term Time
Time: 4.30 pm - 5.30 pm
Ages 6-17yrs
Bookable via the membership zone

Join the bouldering club

Following the taster session, participants can join the Bouldering Club, which meets weekly and requires advanced booking.

Wednesdays, Term time
Time: 4.30pm - 5.30pm
Ages 6-17yrs
Bookable via the membership zone

Have you visited Indirock previously?

Have you visited Indirock without us? It is possible to skip the 'Give it a go' session and proceed directly to the Club sessions to enhance your skills.



STRM - SEND the Right Message
Registered Charity 1193572



To register, scan the QR code or contact: info@strmsupport.co.uk



REGISTER HERE

Why Bouldering helps?

In partnership with Indirock, we provide complimentary bouldering sessions for children and young individuals who are neurodivergent and/or have disabilities. These sessions can benefit children and young people with neurodevelopmental conditions, such as Autism and ADHD, who may struggle with social and emotional communication, self-regulation, and executive functions. Bouldering can help build motor skills, co-ordination, balance, core strength, and self-confidence, enhancing their overall well-being.



What are the signs of dysregulation?

- difficulty managing frustration
- emotionally reactive behaviours
- sporadic impulse control
- struggling with problem-solving

Children and young people who are Autistic or/and are ADHD (amongst other neurodevelopmental conditions) have difficulty with social and emotional communication. They may also need support with self-regulation and developing their executive functions.

Children and young people who are neurodivergent may have difficulties with their gross and fine motor skills. Their stability, balance, and core strength may be underdeveloped.

- Boosts co-ordination
- Builds core strength
- Improves balance
- Strengthen muscles (perfect for those with hypermobility)
- Develop motor processing
- Develops autonomy
- Enhances self-confidence and self-esteem
- Strengthens sequential thinking
- Builds trust
- Promotes decision making
- Gain confidence to take responsibility to make their own choices

Free STRM charity membership registration is required before booking.

Watch our YouTube video about our Bouldering Club at Indirock





Every volunteer
Making every
day count.



Could you give the gift of time?

We're looking to recruit volunteers in a number of areas to help us make a difference to the adults, children and young people we care for.

From helping in the bistro or garden to volunteering in our shops, we have a wide range of opportunities to choose from. Find out more at havenshospices.org.uk/volunteering or scan the QR code opposite.



Scan me!

T 01702 426 237
E volunteering@havenshospices.org.uk



havenshospices.org.uk/volunteering

Registered Charity Number 1022119

Created in RightMarket - 13/1/2023 - 13:05:41

Registered with





Essex Partnership University
NHS Foundation Trust

School Vaccination Catch up Clinics

Has your child missed their school vaccinations?

We are running local catch up clinics for their routine teenage vaccinations. **

Your nearest clinic is:

Timberlog Youth Centre, Basildon, SS14 1PB

10am to 2pm

- Saturday 15th March

The Lodge, Lodge Approach, Wickford SS11 7XX

10am to 2pm

- TBC

It's easy to catch up, book your nearest clinic NOW on 0300 790 0597.

For information on school aged vaccinations please visit our website:
eput.nhs.uk/childrensvaccines

**HPV (from Year 8)
DTP & Meningitis (from Year 9)



#GetWinterStrong



ACL

FREE



☀️ Support Your Teen's Journey ☀️

with Our Free **Online** Courses!

Are you looking for ways to help your teen navigate the challenges of adolescence? Our free online courses are designed to provide parents and carers with the tools and knowledge to support their teens effectively.

From managing emotions to building resilience, our sessions offer valuable insights to help your teen thrive.

Sign up via our website [ACLEssex.com](https://www.aclessex.com) and search by course title or code

The Teenage Brain	(CODE: DOL2C45Y24)	11/02/2025
Understanding Teens	(CODE: DOL4C46Y24)	27/02/2025
Understanding Teenage Anxiety	(CODE: DOL4C47Y24)	27/03/2025

**COMMUNITY &
FAMILY LEARNING**

[ACLESSEX.COM](https://www.aclessex.com) / FAMILY LEARNING



Essex County Council



Freephone 0800 652 1256

fostering.adoption@thurrock.gov.uk

 thurrock.gov.uk



 /thurrockfostering



Foster

with Thurrock Council
thurrock.gov.uk/fostering

ENQUIRE
TODAY

#MakeADifference and become a

Foster Carer

Freephone 0800 652 1256

fostering.adoption@thurrock.gov.uk

 thurrock.gov.uk



SEND Drop in Sessions



SEND Drop In Session

An opportunity to speak to our Additional Needs Early Intervention Team to get advice and support - no diagnosis is required.
Suitable for families* and professionals

Northlands Park Family Hub

Davenants, Basildon, SS13 1QX

1st and 3rd Tuesday of each month 3.30pm to 4.30pm

Fryerns Delivery Site

Greenshoots Building Churchill Avenue, Basildon SS14 2EQ

1st Thursday of each month 9.30am to 10.30am

All About Delivery Site

James Hornsby High School, Leinster Road, Laindon SS15 5NX

3rd Tuesday of each month 10am to 11am

Highcliffe Delivery Site

Rettendon View, Wickford, SS11 8JE

2nd Wednesday of each month 10am to 11:30am

Sunnyside Delivery site

Rosebay Avenue, Billericay CM12 0GH

2nd Thursday of each month 10am to 11am

Little Lions Family Hub

Northwick Park Academy, Third Avenue, Canvey Island SS8 9SU

4th Monday of each month 1.30pm to 2.30pm

Oak Tree Family Hub

Groveswood Primary School, Grove Road, Rayleigh, SS6 8UA

2nd Friday of each month 1.00pm to 2.00pm

*Children do not have to accompany parents/carers to drop in

Call 0300 247 0013 to speak to one of the

Additional Needs Early Intervention Co-ordinators (ANEIC)

Essex Child and Family Wellbeing Service

Service commissioned by:



No Booking Required



Community & Family Learning

ACL

COMMUNITY & FAMILY LEARNING

FREE

ONLINE WORKSHOPS
FOR
PARENTS & CARERS



NEW session
subjects added
regularly!

SETTING BOUNDARIES
MANAGING BIG EMOTIONS
UNDERSTANDING CHILDREN'S ANXIETY
SAVE ENERGY, SAVE MONEY
WINTER BUDGETING



SCAN ME

FOR MORE INFORMATION, OR TO ENROL...[SCAN QR CODE](#), [CLICK HERE](#), OR [VIEW WEBSITE](#)...

NEED HELP? EMAIL ACLFAMILYLEARNING@ESSEX.GOV.UK



'FAMILY LEARNING'
ACLESSEX.COM



Essex County Council

**THE APPLETON
SCHOOL**

Croft Road
Benfleet
Essex
SS7 5RN

Phone:
01268 794215

Email:
info@theappletonschool.org

Website:
www.theappletonschool.org

Quick Links

[Arbor](#)

[ParentMail](#)

[Google Drive](#)

[Satchel One](#)

[Microsoft Teams](#)

[Never Acceptable](#)

Term Dates

Please click on the following link to go direct to the site:

<https://www.theappletonschool.org/parents/term-dates>

Please click on the following link to go direct to the document:

https://www.theappletonschool.org/user/pages/04.parents/09.term-dates/Term_Dates_2024-25.pdf

Spring Term Dates 2025

Friday 3rd January **Non-pupil day**

Monday 6th January **Students return**

Monday 17th February- Friday 21st February **Half term**

Friday 7th March **Non-pupil day**

Friday 4th April **Last day of term**

Summer Term Dates 2025

Monday 21st April **Bank Holiday**

Tuesday 22nd April **Students return**

Monday 5th May **Bank Holiday**

Monday 26th May – Friday 30th May **Half Term**

Friday 18th July **Last day of term**

Monday 21st July **Non-pupil day**

THE APPLETON
SCHOOL

Croft Road
Benfleet
Essex
SS7 5RN

Phone:
01268 794215

Email:
info@theappletonschool.org

Website:
www.theappletonschool.org

Quick Links

[Arbor](#)

[ParentMail](#)

[Google Drive](#)

[Satchel One](#)

[Microsoft Teams](#)

[Never Acceptable](#)

Revision Resources & Extra-Curricular

GCSE Revision Resources

We have provided a wide range of resources to aid your child when it comes to their revision for each of their examination subjects.

<http://www.theappletonschool.org/students/revision-resources>

A-Level Revision Resources

We have provided a wide range of resources to aid your son/daughter when it comes to their revision for each of their examination subjects.

<http://www.theappletonschool.org/sixth-form/student-life/ks5-resources>

Extra-Curricular Clubs and Activities

Please click on the following link to go direct to the site:

<https://www.theappletonschool.org/parents/clubs-and-activities>

Alternatively, you can access the time tables directly via the following links:

<https://www.theappletonschool.org/user/pages/04.parents/19.clubs-and-activities/PE%20Extra-Curricular%20Timetable%20February-April%202025.pdf>

<https://www.theappletonschool.org/user/pages/04.parents/19.clubs-and-activities/Extra%20Curricular%20Clubs%20and%20Activities%20Appleton%20School.pdf>